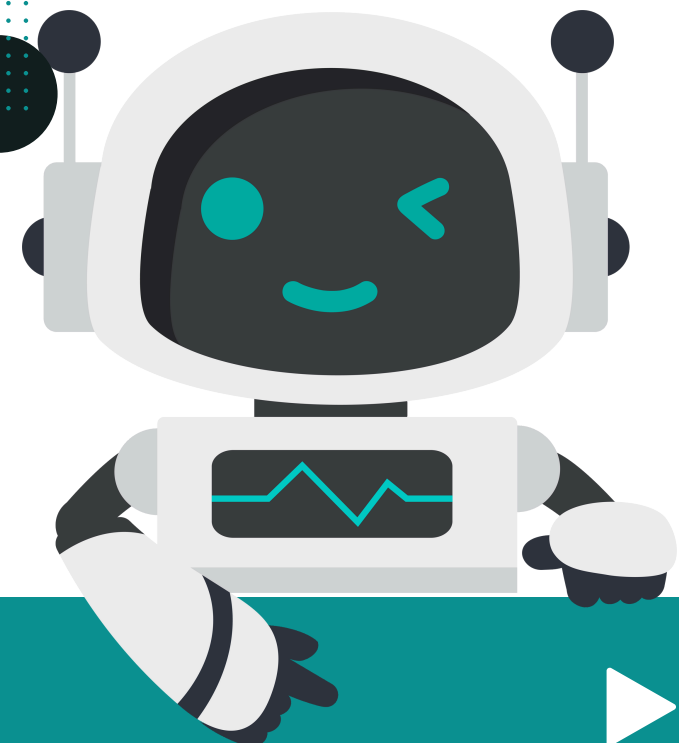




EMI 教師增能講座

**Centering Teacher Agency and Human-Human Connection in the Age of AI:
Designing Ethical, Process-Oriented Learning
and Assessment with, and without, AI**



THE EDUCATION UNIVERSITY
OF HONG KONG

DR. ANGEL LIN



Dates: Dec 17-Dec 18



Dec 17 15:00-17:00 (Q606)

**“Centering Teacher Agency and Human-Human Connection in the Age of AI:
Designing Ethical, Process-Oriented Learning
and Assessment with, and without, AI”**



Dec 18 9:00-12:00 (R402)

**“Critical and Ethical Engagement with
GenAI through the 4T Lenses”**

